



Risk Assessments

Presented by
Bryan Picado and Shawn Porter
Supply Chain Security Specialists



U.S. Customs and
Border Protection



Field Operations



Topics

Smuggling Trends

Trend Analysis

Risk Assessment



U.S. Customs and
Border Protection



Field Operations



Trends – Supply Chain Breakdown

Improper monitoring of conveyance throughout entire supply chain, to include: pre-determined routes, dispatch operations, communication, inadequate use of GPS

Subcontracting – no direct control – no site visits/audits & screening procedures of business partners

Inadequate personnel screening – interview, socio-economic visits, background checks

Lack of trailer inspections after consolidation stops – use of padlock



U.S. Customs and
Border Protection



Field Operations



Trends – Supply Chain Breakdown

Verifications and self-policing of processes and procedures

Lack of engagement and understanding of the supply chain

Management oversight and accountability



U.S. Customs and
Border Protection



Field Operations



Trend Analysis

Most common failed criteria factors enabling a security breach (multiple factors):

Conveyance Security:	Tracking & Monitoring	51%
Container Security:	Sealing/Trailer Inspections	49%
Business Partners:	Screening & Subcontracting	46%
Personnel Security:	Background Checks	31%



U.S. Customs and
Border Protection



Field Operations



Trend Analysis

Contributing factors:

Internal Conspiracy	74%
Threat/Intimidation	3%
Bribes	11%
Unspecified	12%



U.S. Customs and
Border Protection



Field Operations



Trend Analysis

Location factors:

In transit	51%
Factory	25%
Exchange Hub	17%
Unspecified/Other	7%



U.S. Customs and
Border Protection



Field Operations



Trend Analysis

Security Breaches by Entity:

Highway Carriers	48%
Importers	30%
Manufacturers	8%
Brokers	8%
Consolidators	3%
Sea/Air/Rail	2%
Marine Terminal	1%



U.S. Customs and
Border Protection



Field Operations



Conducting a Risk Assessment

Mapping the Cargo Flow

Threat Assessment

Vulnerability Assessment

Action Plan and Follow-up

Documenting the Process



U.S. Customs and
Border Protection



Field Operations



Mapping the Cargo Flow

Who physically handles the freight

Who knows about the shipment (brokers, freight forwarders)



U.S. Customs and
Border Protection



Field Operations



Mapping the Cargo Flow

1	Supply Chain Step	Type of Service	Company Name
2	Storage Yard	Where conveyances are stored when not in use	Super Secure Freight (Address)
3	First Pickup	Manufacturing factory and location where goods are loaded	ABC Manufacturer (Address)
4	Transportation to next pickup	Highway Carrier	Super Secure Freight
5	Second Pickup	Manufacturing factory and location where goods are loaded	XYZ Manufacturer (Address)
6	Transportation to next pickup	Highway Carrier	Super Secure Freight
7	Third Pickup	Manufacturing factory and location where goods are loaded	LNM Manufacturer (Address)
8	Transportation to Border	Highway Carrier	Super Secure Freight
9	Export Broker	Company that processes export paperwork for cargo	Global Freight Coordinators
10	Port of Entry to US	Port of Entry to US	Port of Buffalo
11	U.S. Customhouse Broker	Company that processes import paperwork for cargo	Paperwork Professionals
12	Transportation to Importer's Facility	Highway Carrier continues delivery of cargo from Canada to importer's facility	Super Secure Freight
13	First Delivery	Importer	Gunion's Gift Emporium (Address)



U.S. Customs and Border Protection



Field Operations



Threat Assessment

Determine what threats exist in your company's environment

These will be different depending upon location

See page 12 for an example



U.S. Customs and
Border Protection



Field Operations



Vulnerability Assessment

Use minimum security criteria as a tool

Analyze own processes

- What procedures are not written that could be?
- What are written but could use more detail / update?
- What processes lack internal audits?

Business Partners (non-C-TPAT/PIP)

- Security Questionnaires, backed up by...
- Site Visits



U.S. Customs and
Border Protection



Field Operations



Action Plan and Follow Up

Written Action Plan to address vulnerabilities identified

- Allows assignment to an individual
- Allows tracking and monitoring of follow up
- Once completed, reminds you to verify solution still in place during next risk assessment cycle
- Evidence to SCSS risk assessment is being conducted



U.S. Customs and
Border Protection



Field Operations



Document the Process

Some people may prefer to document an outline of this process before beginning and modify it as experience dictates during or after the first use of the process

Once completed, document the process in order to capture the knowledge gained and what worked in the process

Will institutionalize the process so it does not reside with only one person

Will help identify which employees need training in the risk assessment process



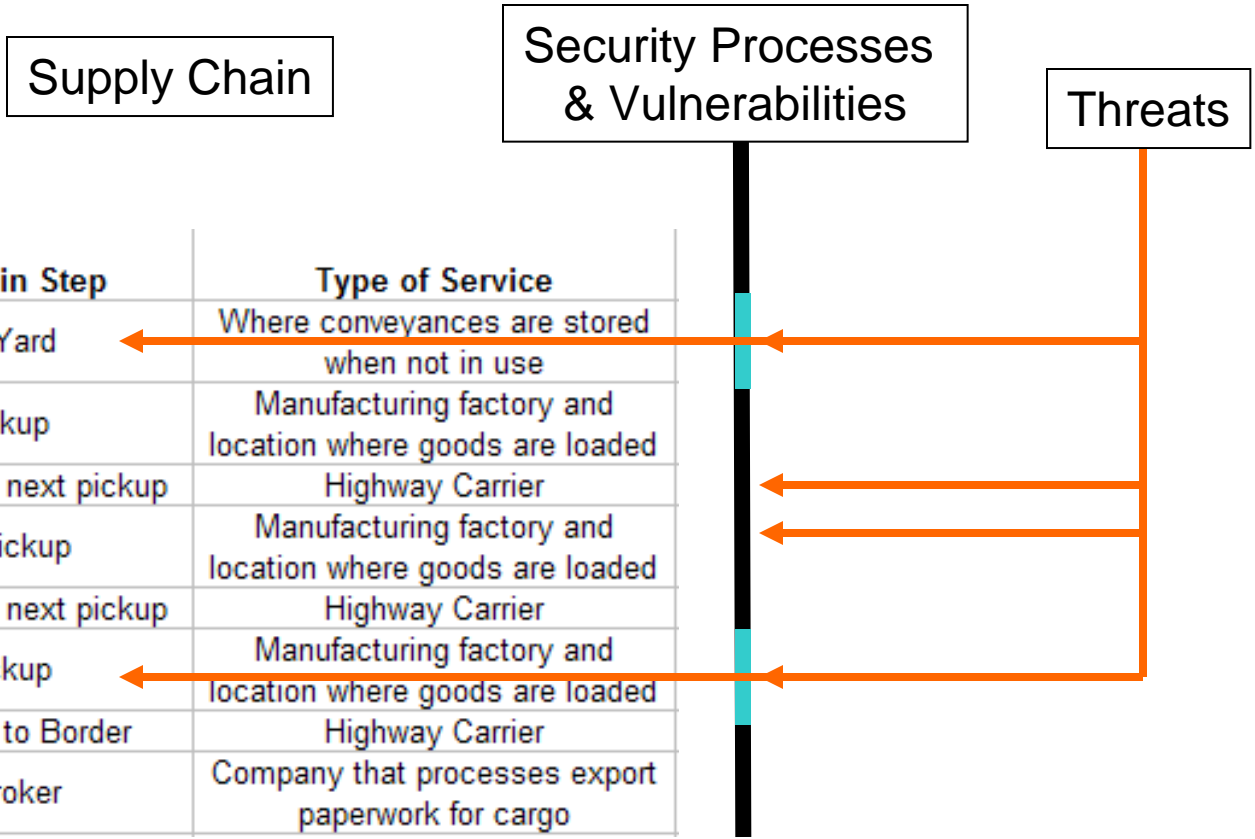
U.S. Customs and
Border Protection



Field Operations



Putting it Together Visually



U.S. Customs and Border Protection



Field Operations



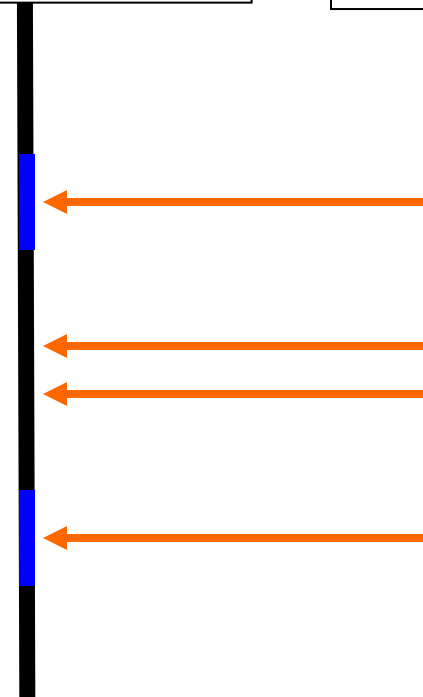
Putting it Together Visually

Supply Chain

Security Processes & Vulnerabilities

Threats

1	Supply Chain Step	Type of Service
2	Storage Yard	Where conveyances are stored when not in use
3	First Pickup	Manufacturing factory and location where goods are loaded
4	Transportation to next pickup	Highway Carrier
5	Second Pickup	Manufacturing factory and location where goods are loaded
6	Transportation to next pickup	Highway Carrier
7	Third Pickup	Manufacturing factory and location where goods are loaded
8	Transportation to Border	Highway Carrier
9	Export Broker	Company that processes export paperwork for cargo



U.S. Customs and Border Protection



Field Operations



In Conclusion

Discussed history of security breaches involving C-TPAT members

Most common criteria elements that were inadequately addressed and contributed to the security breaches

How to build a Risk Assessment process that fits your business model



U.S. Customs and
Border Protection



Field Operations

